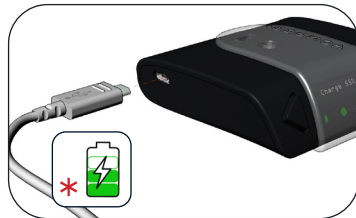


## 7. Charger

Jauge de batterie



\* EasyGo doit être allumé pour charger



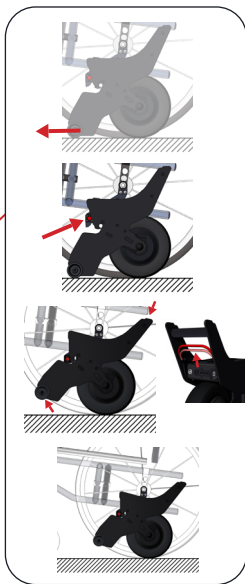
# YOMPER+

Notice rapide

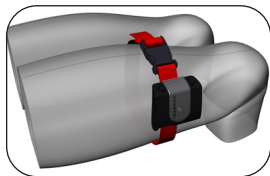
# 1. Allumer



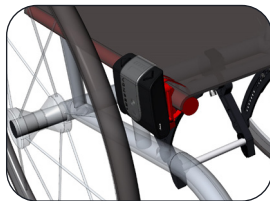
# 2. Atteler



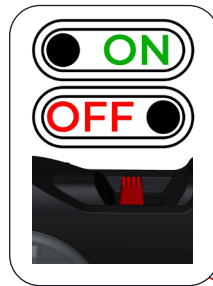
# 3. Placer



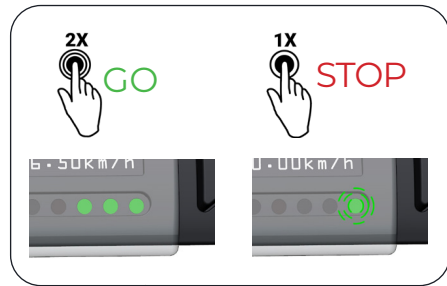
OU



# 4. Connecter



# 5. Commander



# 6. Choisir



MODES



MODE INTÉRIEUR



MODE EXTÉRIEUR